

Copyright is reserved  
Copying or reproduction of this drawing or electronic data without the written permission of the legal owner is prohibited

Disclaimer  
No responsibility is implied for the accuracy or for any consequence resulting from the miss use or alteration of this information

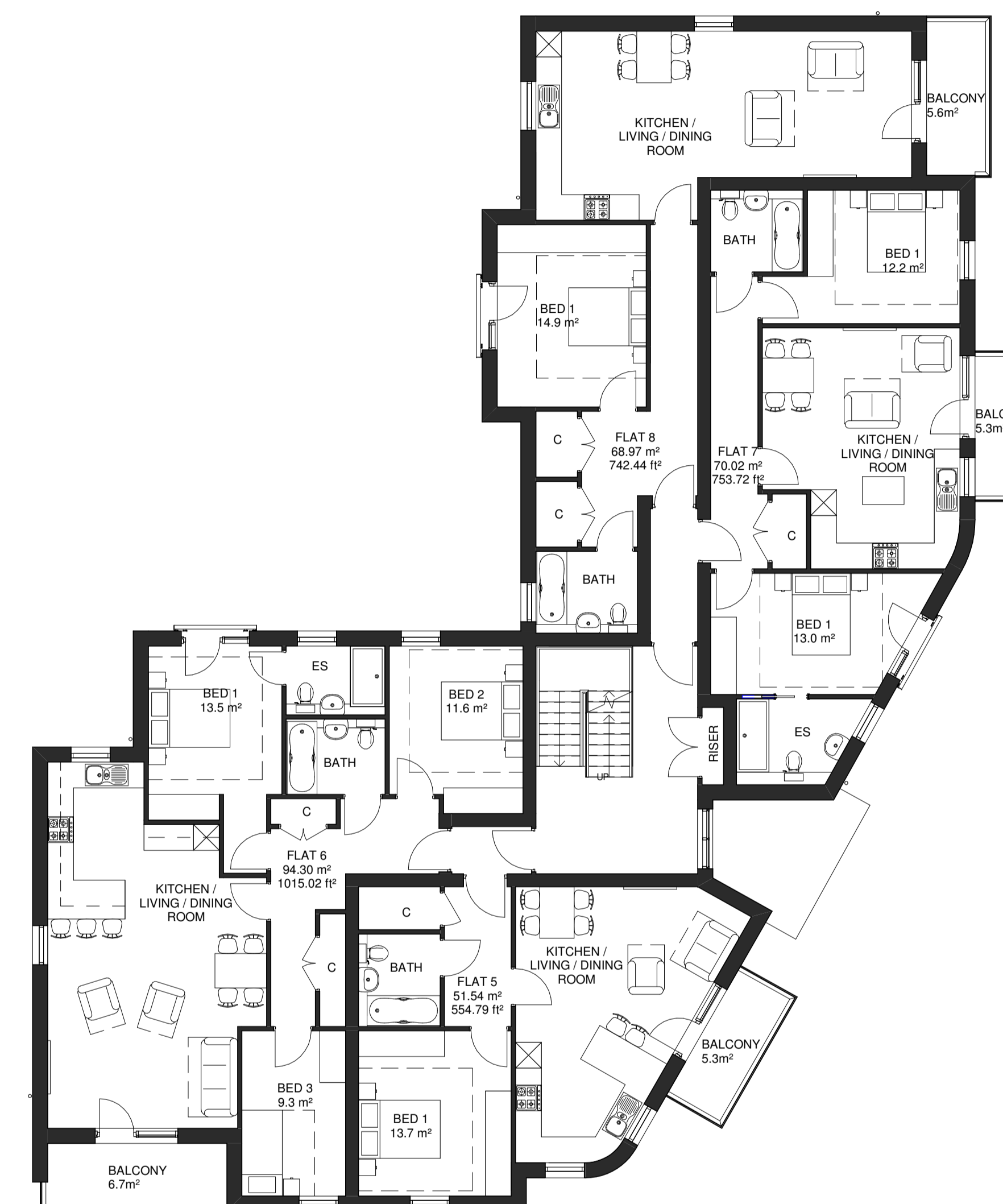
Explanations  
Unless otherwise stated:  
 • General tolerances are to ISO 2768-mK  
 • Dimensions are in millimetres  
 • Symbols should be read in conjunction with BS 8541-2

Instructions  
Responsibility is not accepted for values obtained in scaling from this drawing  
Construction information should be taken from written dimensions only  
Inconsistencies should be reported to the legal owner immediately

LEGEND:

- BUILDINGS TO BE DEMOLISHED - TOTAL AREA 137.2m<sup>2</sup>
  - LAND OWNED BY APPLICANT - TOTAL AREA 543m<sup>2</sup>
  - LAND TO BE PURCHASED BY APPLICANT - TOTAL AREA 311.5m<sup>2</sup>
  - EXISTING TREES TO BE REMOVED
  - EXISTING TREES TO BE RETAINED
  - PROPOSED TREES - INDICATIVE ONLY
  - PERMEABLE PAVING INDICATED THUS
- 2No CAR PARKING SPACES PROVIDED - DISABLED  
 AMENITY SPACE PROVIDED 359.4M<sup>2</sup>  
 CYCLE SPACES PROVIDED 19No (REQUIRED 19No)  
 BIN ENCLOSURE PROVIDED TO LA REQUIREMENTS  
 GENERAL PURPOSE (TIT) BOXES TO BE PROVIDED  
 ACCESS PATHS TO BE PAVED WITH FALLS TO MEET BUILDING REGULATIONS AD PART M

Area Schedule (GIA)			
Name	No of Beds	Area	Area ft
FLAT 1	1B 2P	51.5 m <sup>2</sup>	554.8 ft <sup>2</sup>
FLAT 2	3B 5P	94.3 m <sup>2</sup>	1015.0 ft <sup>2</sup>
FLAT 3	1B 2P	51.0 m <sup>2</sup>	549.1 ft <sup>2</sup>
FLAT 4	1B 2P	63.8 m <sup>2</sup>	686.5 ft <sup>2</sup>
FLAT 5	1B 2P	51.5 m <sup>2</sup>	554.8 ft <sup>2</sup>
FLAT 6	3B 5P	94.3 m <sup>2</sup>	1015.0 ft <sup>2</sup>
FLAT 7	2B 4P	70.0 m <sup>2</sup>	753.7 ft <sup>2</sup>
FLAT 8	1B 2P	69.0 m <sup>2</sup>	742.4 ft <sup>2</sup>
FLAT 9	1B 2P	51.5 m <sup>2</sup>	554.8 ft <sup>2</sup>
FLAT 10	2B 3P	69.8 m <sup>2</sup>	751.5 ft <sup>2</sup>
FLAT 11	2B 4P	70.0 m <sup>2</sup>	753.7 ft <sup>2</sup>
FLAT 12	1B 2P	62.8 m <sup>2</sup>	675.4 ft <sup>2</sup>
Grand total: 12		799.6 m <sup>2</sup>	8606.8 ft <sup>2</sup>



CRANBORNE ROAD

WEDDERBURN ROAD

1 GA Site Layout & Ground Floor Plan (98.00 AOD)  
1:100

2 GA First Floor Plan  
1:100

C02	18.09.2020	Entrance Lobby Added	AT - KMD
C01	06.07.2020	For Submission	AT - KMD
P3	02.07.2020	SF Flats Layouts & Other Minor Amendments	AT - KMD
P2	26.06.2020	Amended To Accord to LPAs Comments	AT - KMD
P1	27.01.2020	For client's comment	ZH - KMD
REV/DATE		COMMENT	CHK - APD

Key - CHK = Checked by APD = Approved by



The Courtyard 59 Church Street  
 Staines - upon - Thames TW18 4XS  
 +44 (0) 1784 459211 | info@rdjwtd.com | www.rdjwtd.com

PROJECT  
 2A Cranborne Road, Barking

TITLE  
 Proposed Ground & First Floor Plans

PURPOSE OF ISSUE Planning	DRAWN BY ZH	CHECKED BY KMD
PROJECT No L2661	STATUS A3	REVISION C02
SCALE @ A1 1:100		

DRAWING NUMBER  
 2661-RDJWL-01-ZZ-DR-A-0025